

My Wycked Ways

Transparency sheet wing technique

Supplies needed: Dimensional Adhesive
Spray Lacquer
Colored craft wire (20g)
Glitter/beads
FabriTac Adhesive
Pearl Ex powder (optional)



First, I spray a light coat of clear lacquer on the surface of each side of the print. Spray one side first, let dry, then spray the second side. This coating helps the **Diamond Glaze** to hold to the slick surface of the transparency film.

I use Diamond Glaze dimensional adhesive to add texture and make the wings come alive. This takes away the flat look of the transparency film.

You can use 3D Lacquer as an alternative to Diamond Glaze.



When using any kind of liquid adhesive, always dab a small bit on the film which is not part of the wing. That will get out any trapped air in the bottle nozzle.

Check all of the sections for air bubbles which can happen as glue is squeezed from the bottle. If you find some really big ones, stick them with a dry tipped pin point. I find I have to wipe the tip off after each bubble.



The Diamond Glaze will appear milky when first applied. When it is completely clear it will be dry. Turn it over and apply the Glaze to the other side, again allowing to dry completely.

To add a bit of sparkle to your wings, you can texture one side and when dry, turn it over and coat the back of the wing with Diamond Glaze and add iridescent film.

I recommend the film you find in craft stores and florist shops for wrapping gifts and baskets. This film is much thinner and is more transparent.

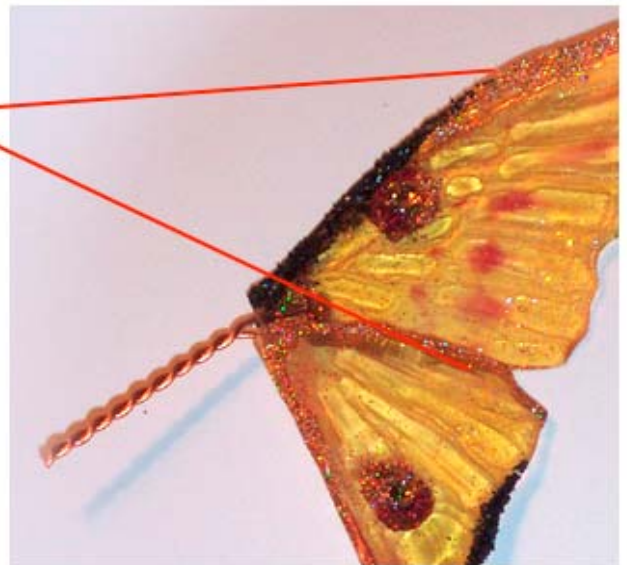


The fusible films can be used, but are more firm and can make a heavier wing. The fusible films such as Angelina or Fantasy film offer a wide variety of colors.

Using any kind of film will add time to the drying process. If I use iridescent film, I won't touch my wings again for a few days to give it time to dry. Once it is dry, I will add texture to the iridescent side, following the same steps as I did on the front.

*When the wings are textured and completely dry, cut them out. I will choose a colored wire as close to the color at the top of the wing. With the natural brown Cicada, that would be a brown **20 gauge wire**. I only go as far as a half inch from the outer edge and I leave almost an inch and a half at the inner corner as over hang. These will twist together making the insertion stem. Use **FabriTac** Adhesive to attach wires.*

The wires go up this far



*Before twising the wires together, decorate them with your glitters, beads and rhinestones (if you use them). I like to conceal the wires as much as possible with **glitters and beads**. In the case of a wing pattern with the "eyes" in the wings, I use Swarovski flat back rhinestones to add sparkle and then surround them with contrasting colored glitter.*



Dusting Pearl Ex pigment Powders is another way to add shimmer to transparency wings. I've dusted Pearl Ex over the dried texture. I used a large soft brush. When the wing is completely covered, blow the excess powder off and spray a light coat of lacquer to seal the color. Finish decorating with your favorite embellishments